

Green Hills MULTI IDE 的评估版 License 的申请流程 (Windows)

一、获取安装包

1. 确认微控制器架构

- (1) ARM(AArch32& AArch64)
- (2) PowerArchitecture
- (3) TriCore
- (4) RH850/V850
- (5) Intel(x86& x64)
- (6) RISC-V
- (7) MIPS

2. 确认安装环境:

- (1) Window: Windows 8, 10, 11 (64-bit host distribution only)
- (2) Linux: CentOS 6.x, 7.x; Ubuntu 14.04, 16.04, 18.04, 20 LTS releases (64-bit host distributions only; 32-bit compatibility libraries still required for MULTI, probe, and installation)

3. 请联系亿道电子的技术支持工程师（邮箱：zhikang.luo@emdoor.com）获取对应系统、架构的安装包。

注意：未特别说明，提供的安装包均为最新版本的软件安装包。如需非最新版本的安装包，请和对接的技术支持工程师沟通获取对应版本的安装包。

二、安装软件

1. 双击下载好的.ISO文件，进入到安装包文件夹目录中。
2. 进入到安装目录后，双击执行ginstall.exe（如图2-2）

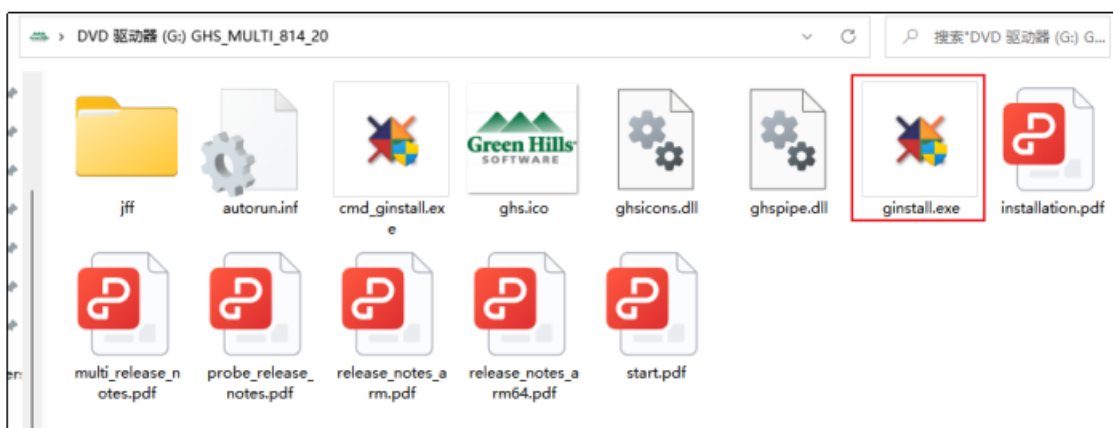


图2-2

3. 进入安装程序，可以选择安装方式。选择Easy Install请直接跳转到本章节的第8步。

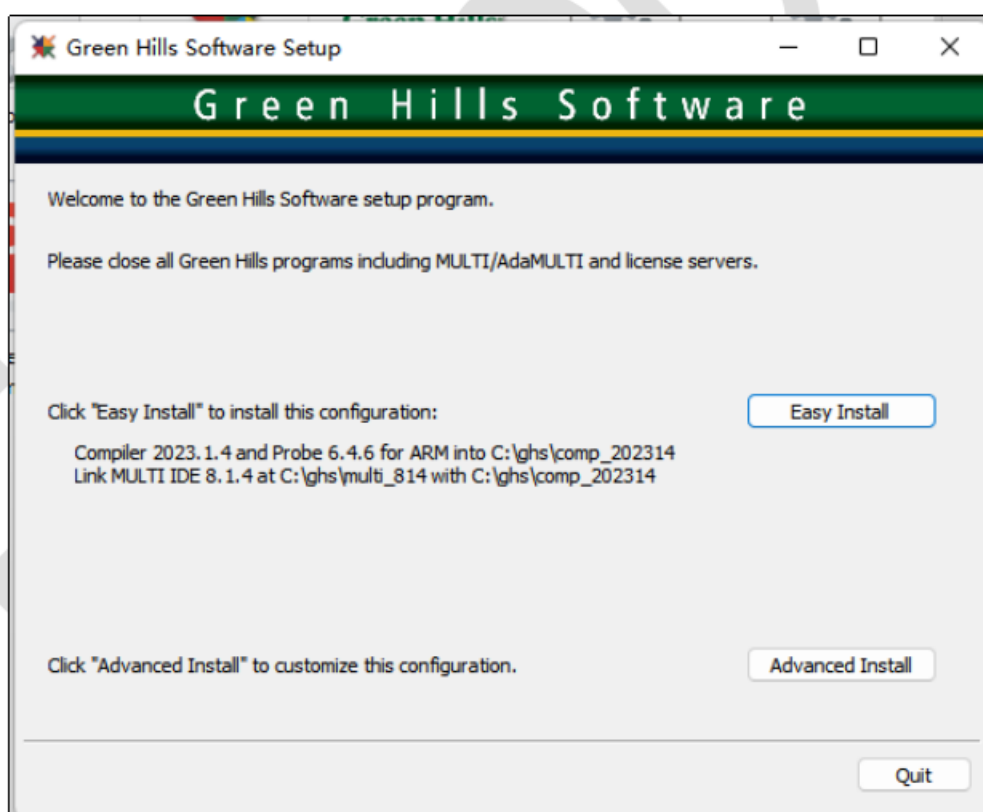


图2-3

4. 然后，勾选Compiler、MULTI IDE，然后Next。（如图2-4）

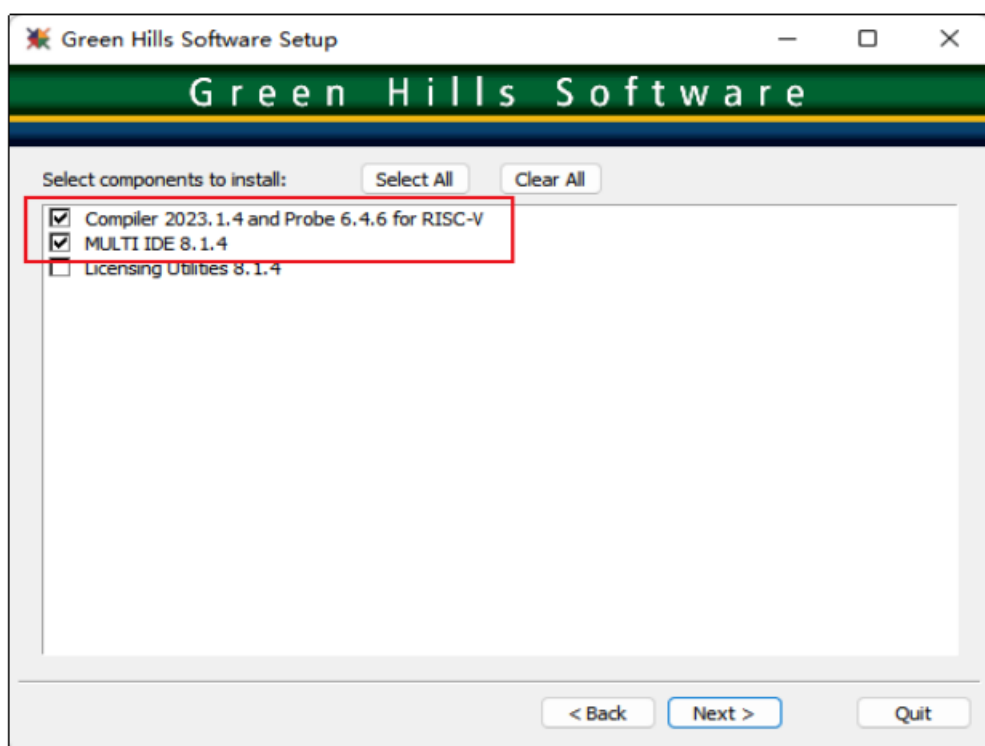


图2-4

5. 然后，在下接下来的步骤中，可以自定义文件夹名字，不建议更改第三级文件夹的名字（例如comp_202314、multi_814）。如果更改了第二级文件夹ghs的名字，2个都需要更改。（如图2-5）

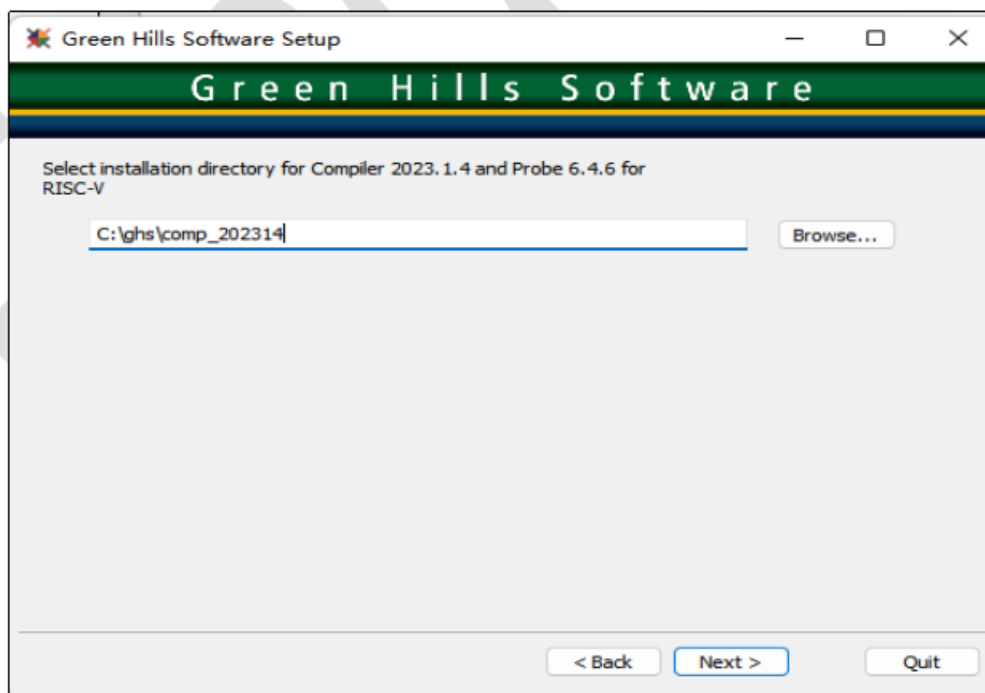


图2-5

6. 选择第一项Create Start Menu entry named和第二项Create Desktop Shortcut，根据需要选择即可（如图2-7）。

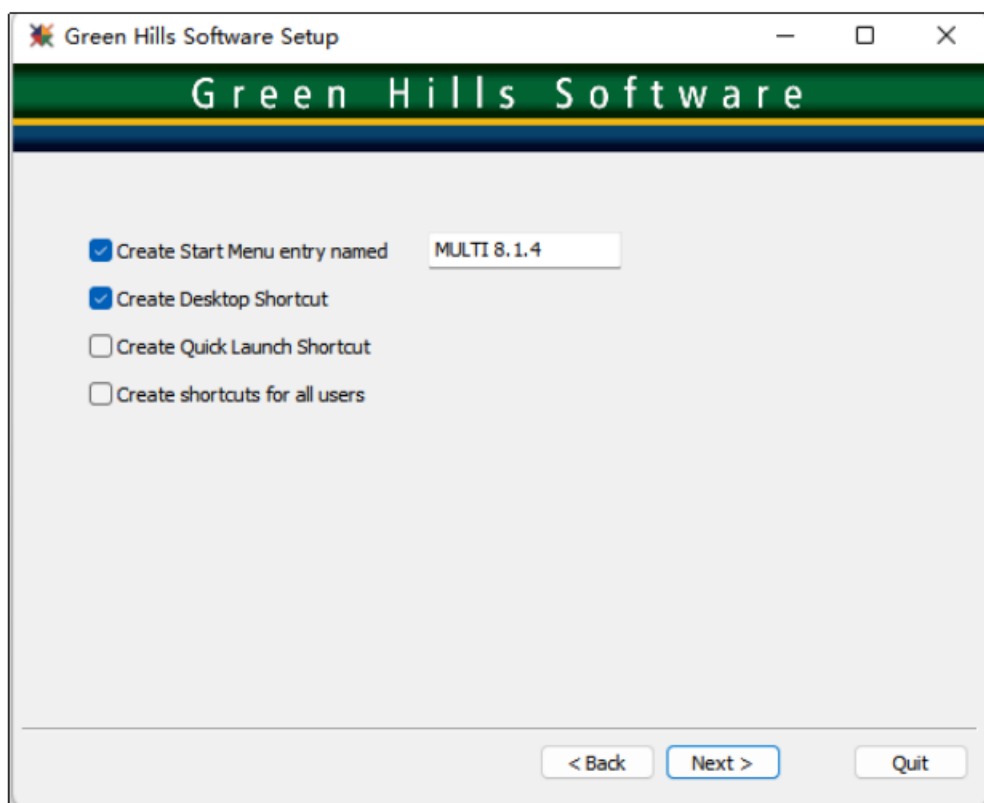


图2-6

7. 这一步默认选择，点击Next。（如图2-7）

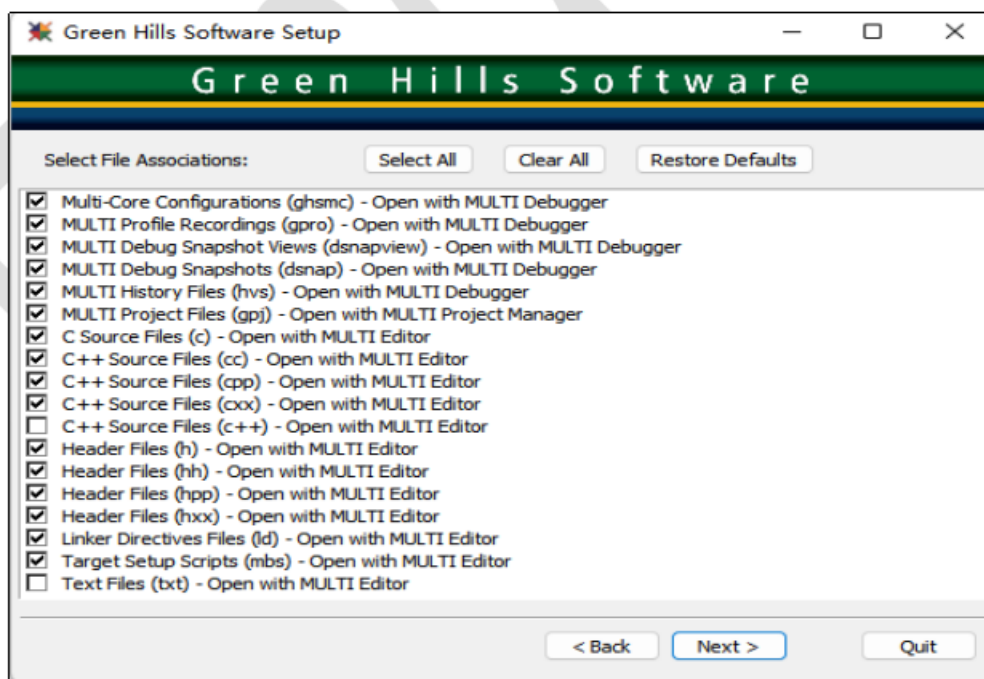


图2-7

8. 然后，选择install进行安装。

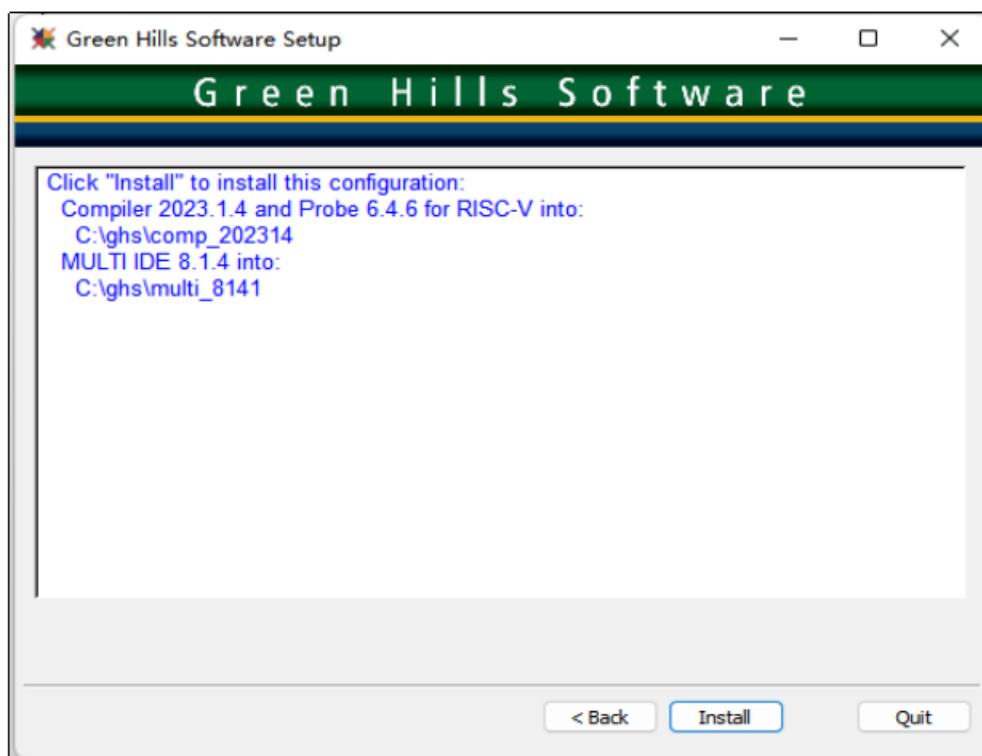


图2-8

三、生成申请文件

1. 安装完成后，运行multi_xxx目录下的mlmadmin.exe。
2. 进入到MULTILicensing Wizard窗口后，选择“License my MULTI products (recommended for end users)”，然后Next。（如图3-2）

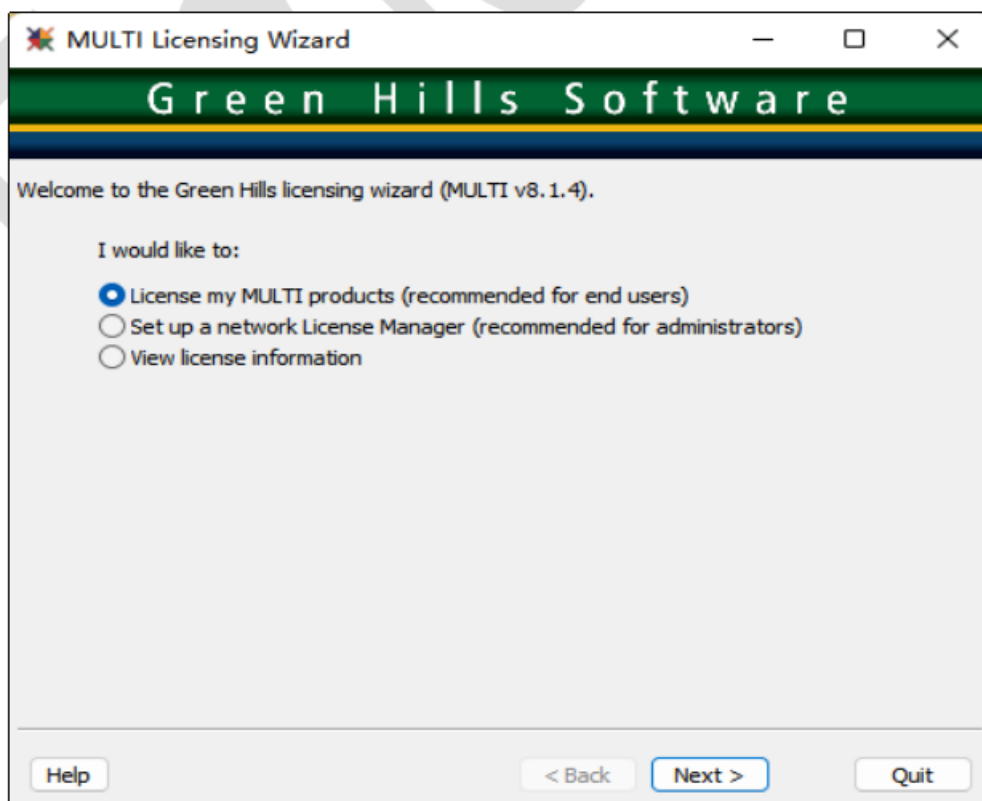


图3-2

3. 选择“Request computer-locked licenses from GreenHills”。(如图3-3)

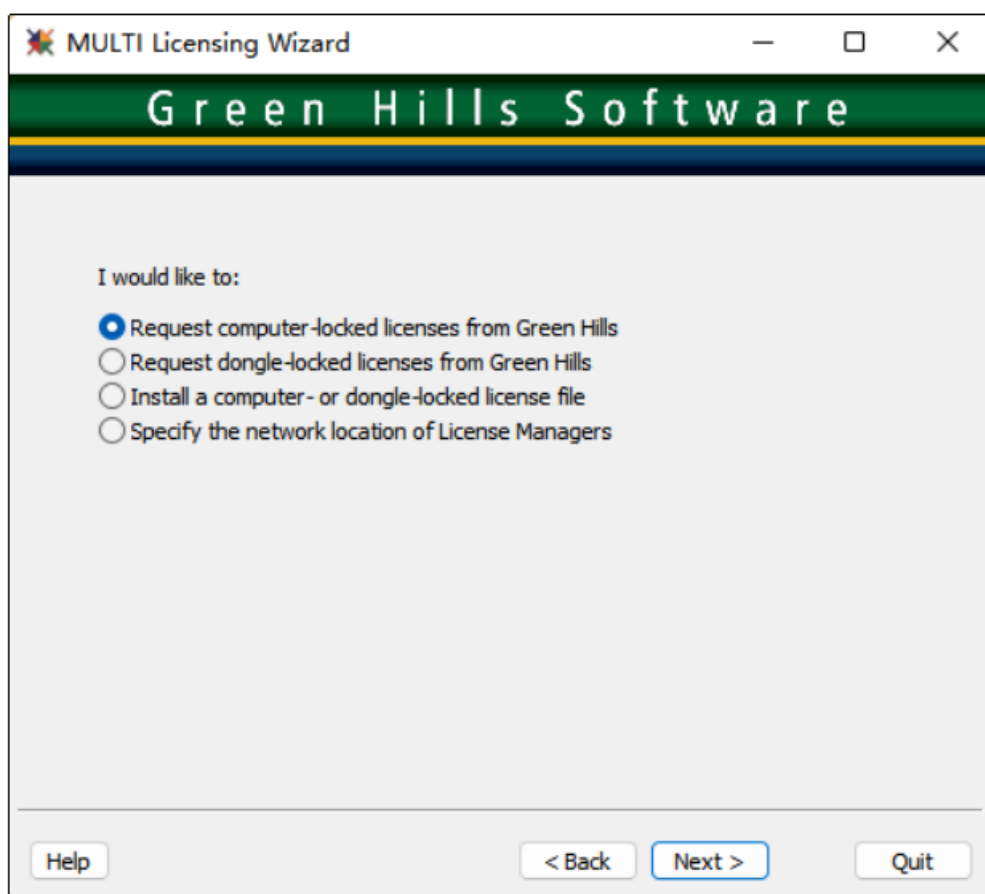


图3-3

4. 选择“Create a license request to e-mail, fax, or mail”。(如图3-4)

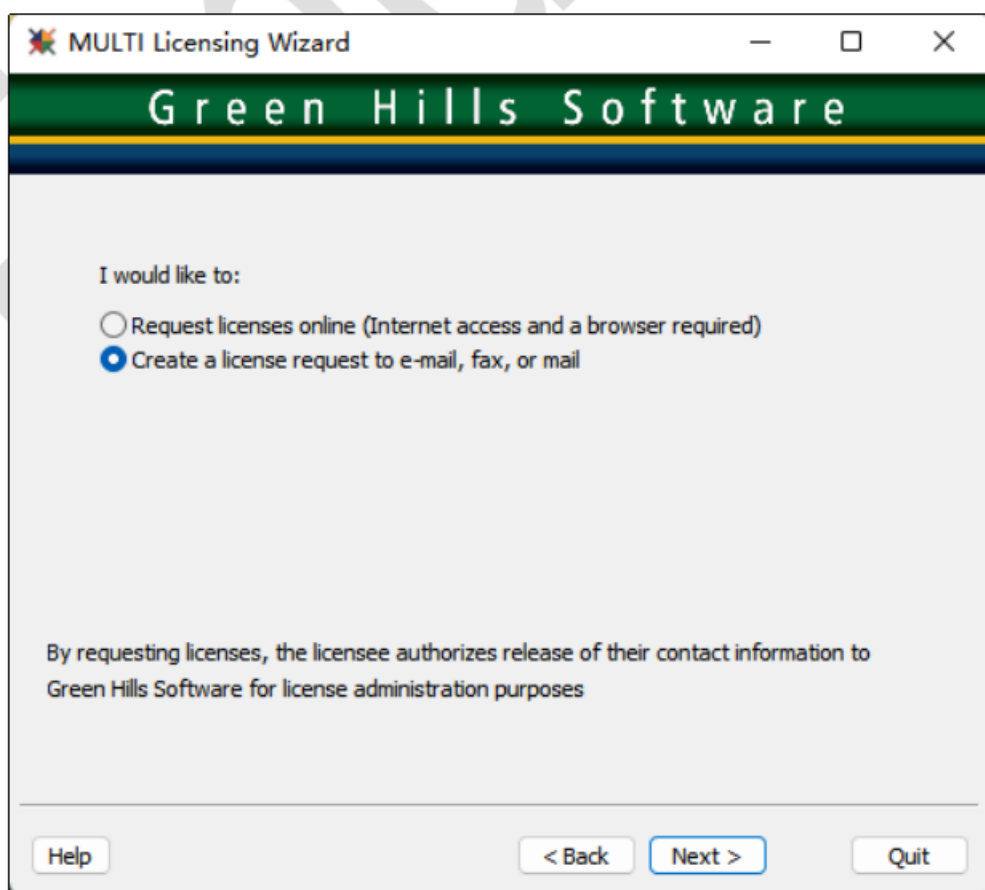


图3-4

5. 然后，在图3-5所示的窗口中，填写信息。

注意：带*是必须填写的信息，并且所填写信息要完整准确，并且请用英文填写。

The screenshot shows a web form titled "License Request Generator". It contains several input fields for user and company information. The fields and their values are as follows:

- Name*: zhikang.luo
- Job Title: (empty)
- Group: (empty)
- Manager: (empty)
- Telephone*: 1365...87
- Fax: (empty)
- E-mail*: zhikang@emdoor.com
- Company*: Shenzhen Yidao Electronic Technology Co., LTD
- Address 1*: 3rd Floor, Building 6, Meigu, Meiling Huigu Science Park, 83 Dabao Road, Baoan District, Shenzhen
- Address 2: (empty)
- City*: shenzhen
- State/Province*: guangdong
- Postal Code*: 51200
- Country*: china

At the bottom of the form, there is a note: "* fields are required". Navigation buttons include "< Back", "Next >", and "Cancel".

图3-5

6. 选择 License 属性 “Computer-locked: license will be locked to this computer”。

The screenshot shows the "License Request Generator" form at a later stage. The "Number of Licenses" is set to 1. Under the "License Availability:" section, the "Computer-locked: license will be locked to this computer" option is selected with a radio button. Other options include "Dongle-locked: license will be locked to a dongle" (with a "Dongle Label:" field), "Host Managed: floating licenses distributed by this computer", and "Named-user: licenses distributed by this computer based on user name".

Below the license availability options is a text area labeled "Special notes to Green Hills license administration staff:". At the bottom, navigation buttons include "< Back", "Next >", and "Cancel".

图3-6

7. 选择License类型“Evaluation”。（如图3-7）

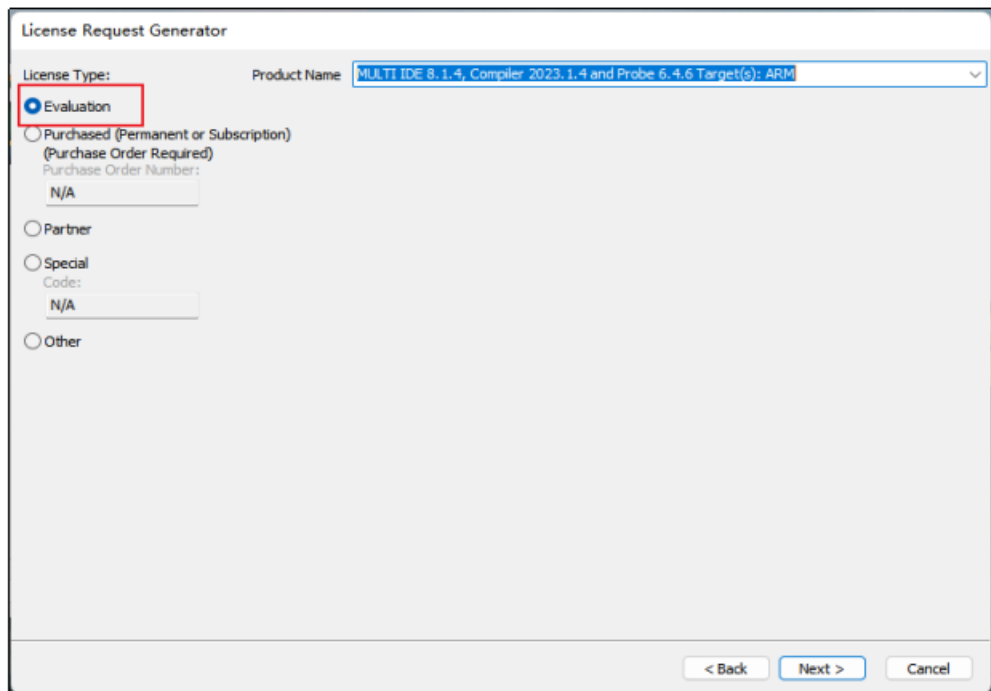


图3-7

8. 然后将申请文件保存下来。（如图3-8）

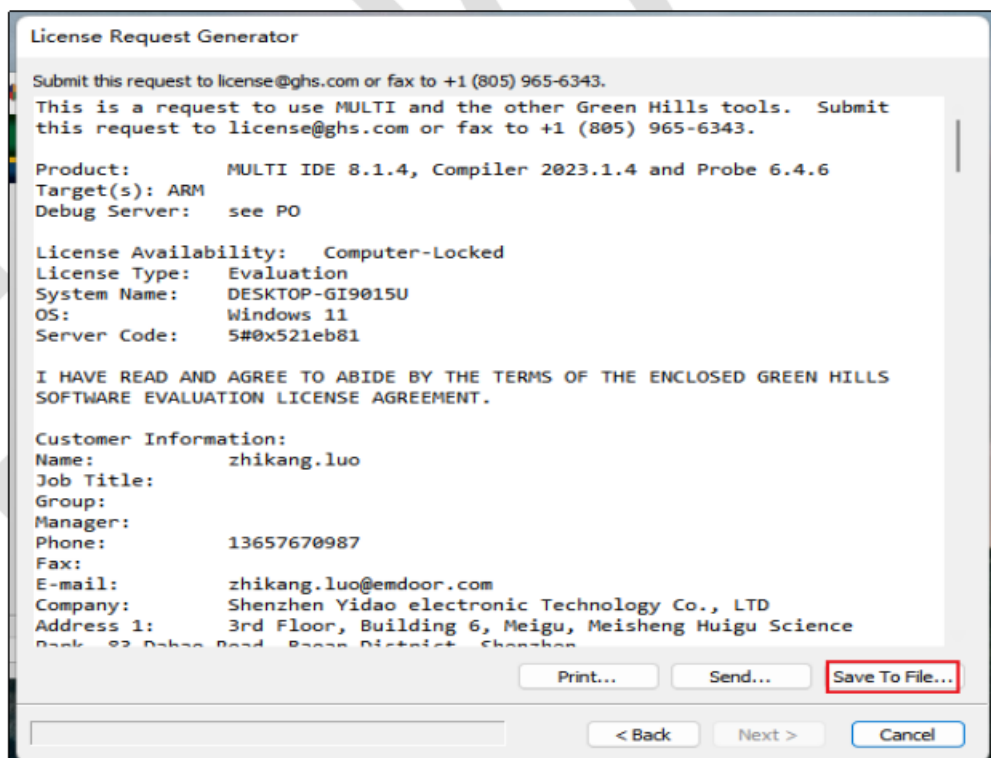


图3-8

将上面保存的申请文件，发送给对接的亿道电子技术支持工程师（邮箱：zhikang.luo@emdoor.com）。我们会将申请文件提交给原厂提供试用license文件，申请完成后，对应的license文件会直接发送到申请文件中填写的邮箱。

Emdoor